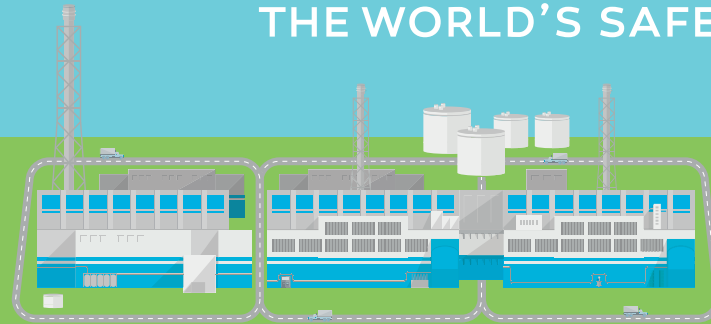




Tokyo Electric Power Company Holdings

# 8 WAYS KASHIWAZAKI-KARIWA AIMS TO BECOME THE WORLD'S SAFEST NUCLEAR POWER PLANT



In response to the Fukushima Daiichi accident, the staff of Kashiwazaki-Kariwa has continuously conducted enhanced safety measures to avoid a similar recurrence.

## SAFER FACILITIES

## SAFER PEOPLE

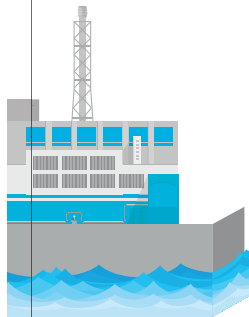
1

### FLOOD PREVENTION MEASURE

# 15M TALL

SEA WALL & FLOOD BARRIERS

With the maximum tsunami height anticipated to be no more than 6m at the facility, a 15m seawall has been constructed to prevent the reactor from being struck. Flood barriers have also been installed in all areas lower than 15m above sea level.



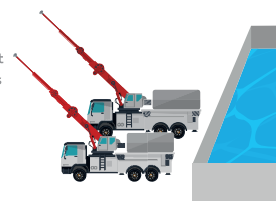
2

### SECURING POWER & COOLING FUNCTIONS

# 20K TONS of WATER RESERVOIR

EQUAL TO 30 OLYMPIC-SIZED POOLS

A reservoir has been built to store 20,000 tons of water 45m above sea level to inject fresh water into the reactors in case pumps cannot be used. Water cannon trucks have also been deployed to inject water into spent fuel pools at higher areas.



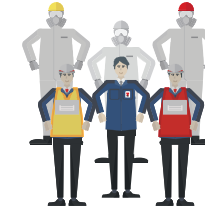
5

### STRENGTHENING OUR WORKFORCE ON THE GROUND

# 324 to 850 EMERGENCY WORKFORCE

# 205 to 260 OPERATORS

TEPCO has increased the number of emergency workers and operators for promptly restoring important facility functions such as power, water injection and debris removal.



\* AS OF JULY 2017

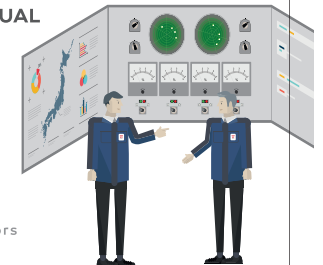
6

### CONTINUOUS TRAINING & EMERGENCY DRILLS

# 17,000 INDIVIDUAL

# 68 PLANT-WIDE

For better organizational readiness, continuous emergency drills are held under the assumption that earthquakes and tsunamis may occur. These include simulation drills for operators and plant-wide drills assuming all power is lost.



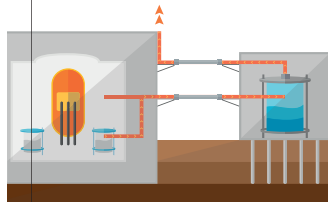
\* AS OF JULY 2017

3

### SECURING POWER & COOLING FUNCTIONS

# 99.9% of RADIOACTIVE PARTICLES

To further prevent accidents that might lead to fuel damage, TEPCO has installed filter vents that remove 99.9% of radioactive particles. This protects both the container from being damaged and the soil outside from contamination.



4

### COMPLIANCE WITH REGULATORY STANDARDS

# from TERRORISM to NATURAL DISASTERS

In compliance with new regulatory standards made by the Japanese Nuclear Regulatory Committee in July 2013, measures have been made against terrorism attacks and serious natural disasters such as earthquakes and tsunami.



7

### TRAINING FOR EMERGENCY VEHICLES

# 405 VEHICLE LICENSES

Important to handling an emergency is effectively operating a variety of vehicles. Employees have earned certification by regularly conducting training in high area water injection and debris removal with heavy vehicles.



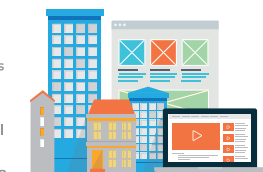
\* AS OF JULY 2017

8

### CONNECTING WITH NEARBY RESIDENTS

# from WEBSITE to SERVICE HALL

The power station proactively discloses information regarding emergency preparation. This includes a public relations brochure, the TEPCO website and the Service Hall where staff members explain the current situation at Kashiwazaki-Kariwa.



WE ARE COMMITTED TO IMPROVING THE SAFETY OF THE KASHIWAZAKI-KARIWA NUCLEAR POWER PLANT.