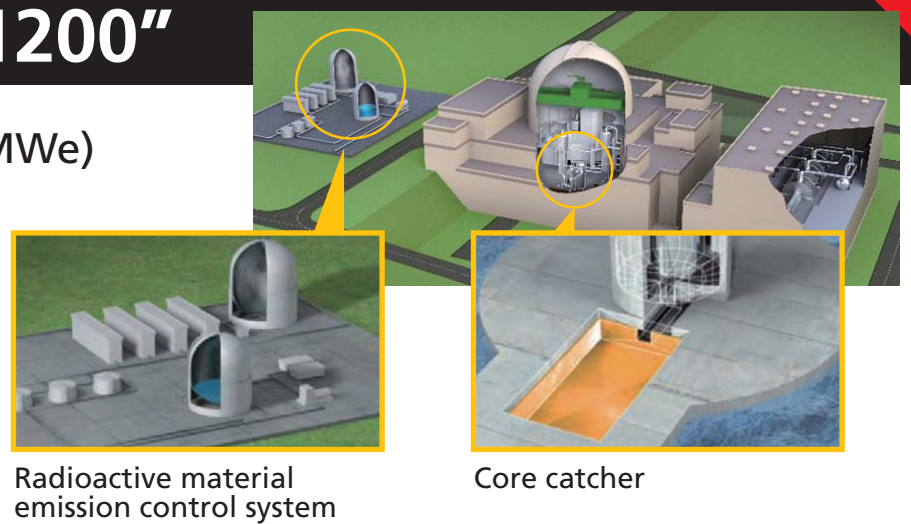


## Development of Advanced Reactors

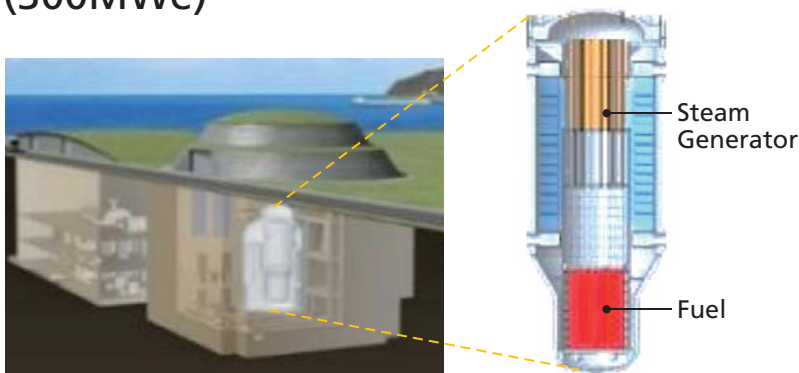
### Advanced LWR "SRZ-1200"

- Power source for existing grids (1,200MWe) that achieves world's highest-level safety with innovated technologies



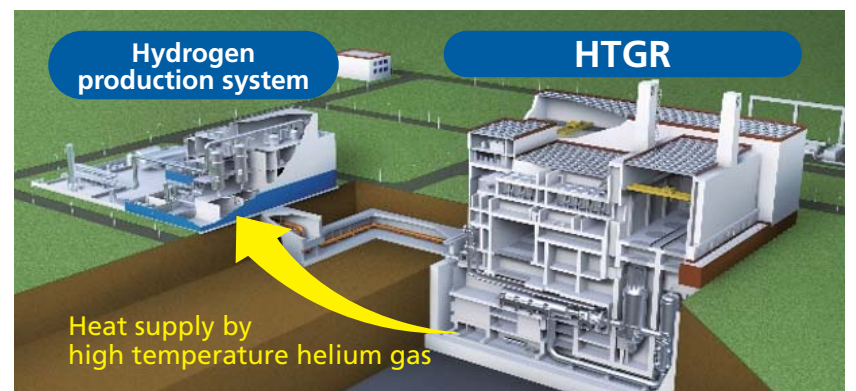
### Small LWR (SMR)

- Distributed power source for small grids (300MWe)



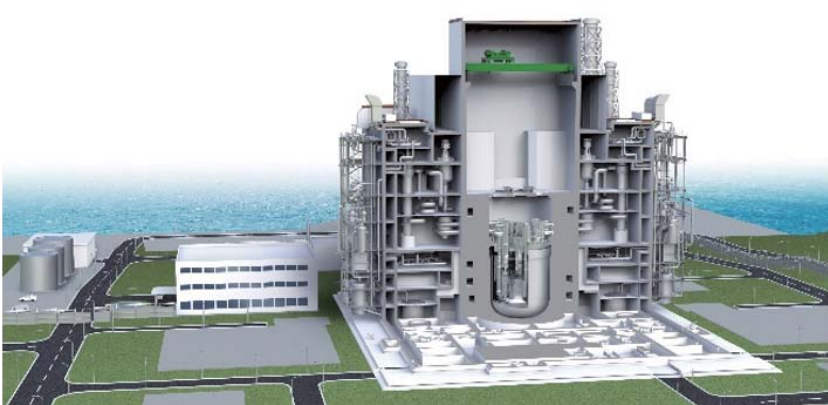
### High-Temperature Gas Reactor

- Large-scale & stable hydrogen production using high temperature heat (900°C~)



### Fast Reactor

- Realizing closed nuclear fuel cycle leading to effective use of resources and reduction of radioactive waste



### Micro Reactor

- Multi purpose portable reactor (for remote island, disaster affected area, etc.)

