

# INITIATIVES OF KAWAUCHI VILLAGE FOR THE RETURN OF ITS RESIDENTS, AND ISSUES



Before the disaster  
Scenic, serene, rural landscape



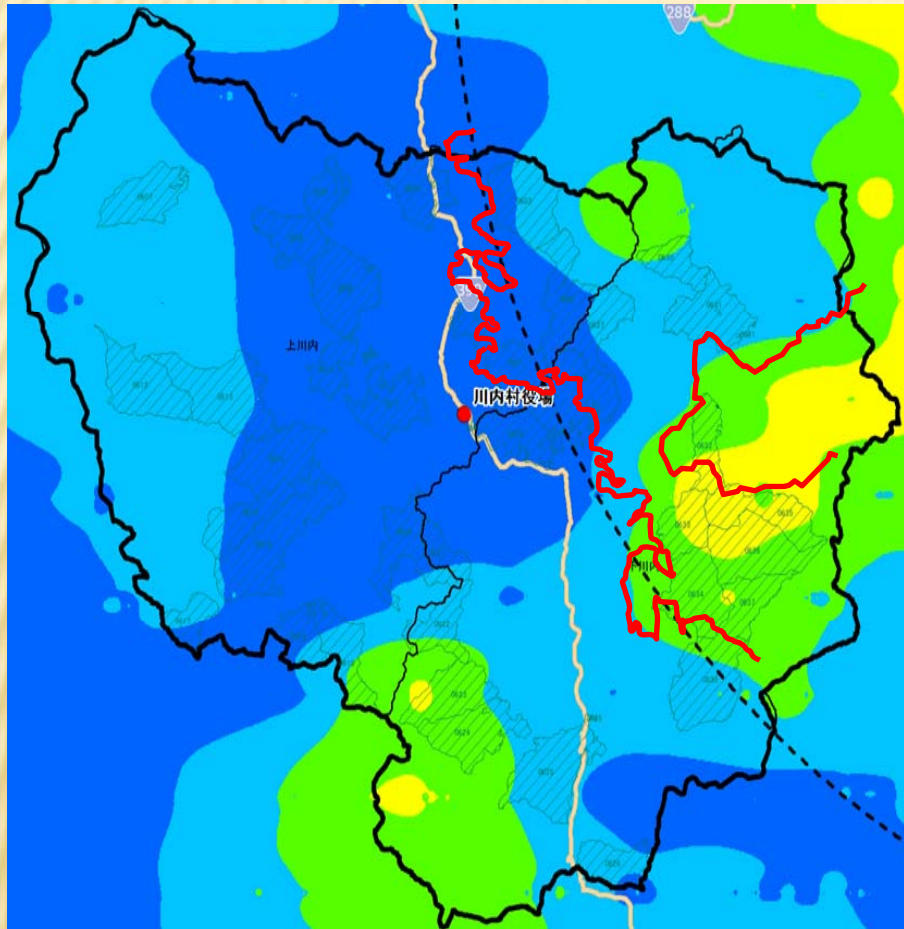
Yuko Endo, mayor of Kawauchi,  
Fukushima Prefecture

# Location of Kawauchi Village in Fukushima Prefecture

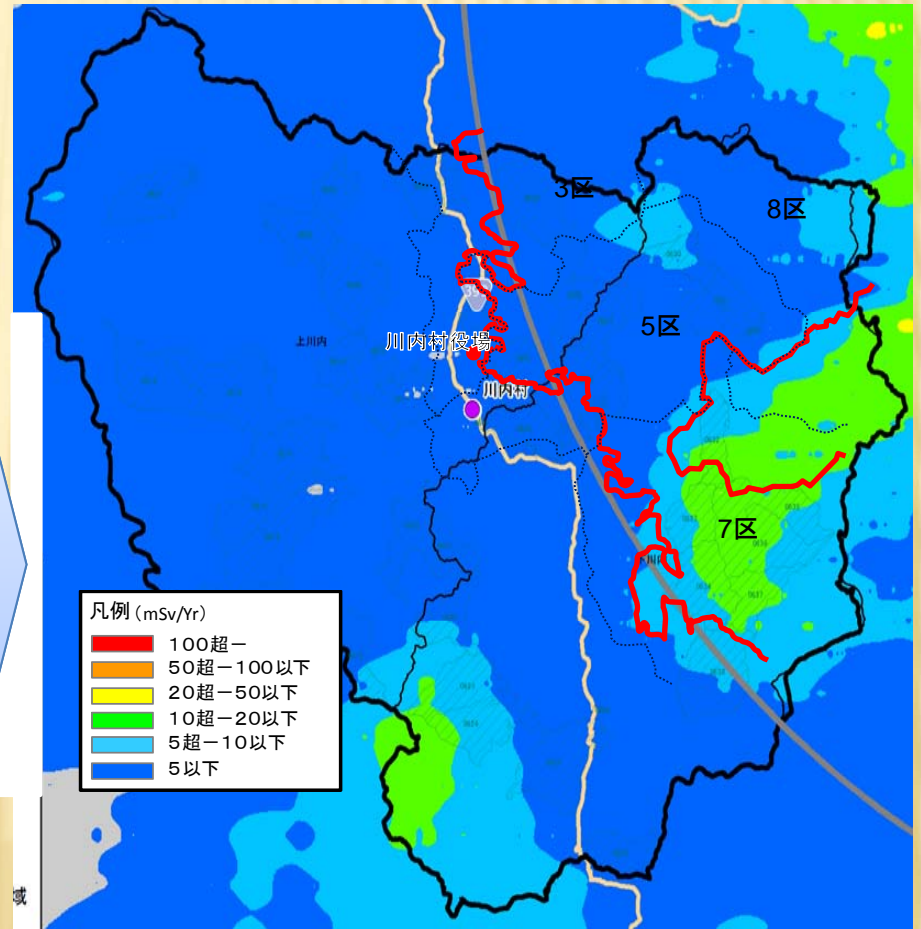


# Radiation Levels in Kawauchi Village

As of November 5, 2011



As of November 19, 2013



After two years

## **“DECLARATION TO RETURN HOME” JAN. 31, 2012**

~ Those who wish will return first

Those with concerns will wait and see ~

- Why is it so difficult to simply go back to one's own home, one's native village?
- There are no restrictions or limits.
- Administrative functions will be restored to establish an environment for villagers to return home.
- Reconstruction means more than putting it back the way it was before the disaster.

# BASIC POLICY ON RETURNING HOME/RECONSTRUCTION

**KEYWORDS: CHOICE, JUDGMENT, INDEPENDENCE**

× **① Choice**

- × Respecting the choice to return or not

× **② Judgment**

- × Individuals judge the risks of their choices
- × Dealing with new issues as a result of the choices made

× **③ Independence**

- × Supporting the planning of new lives without depending on indemnification/compensation, while nevertheless seeking them fully

## × **Specific Areas of Activity**

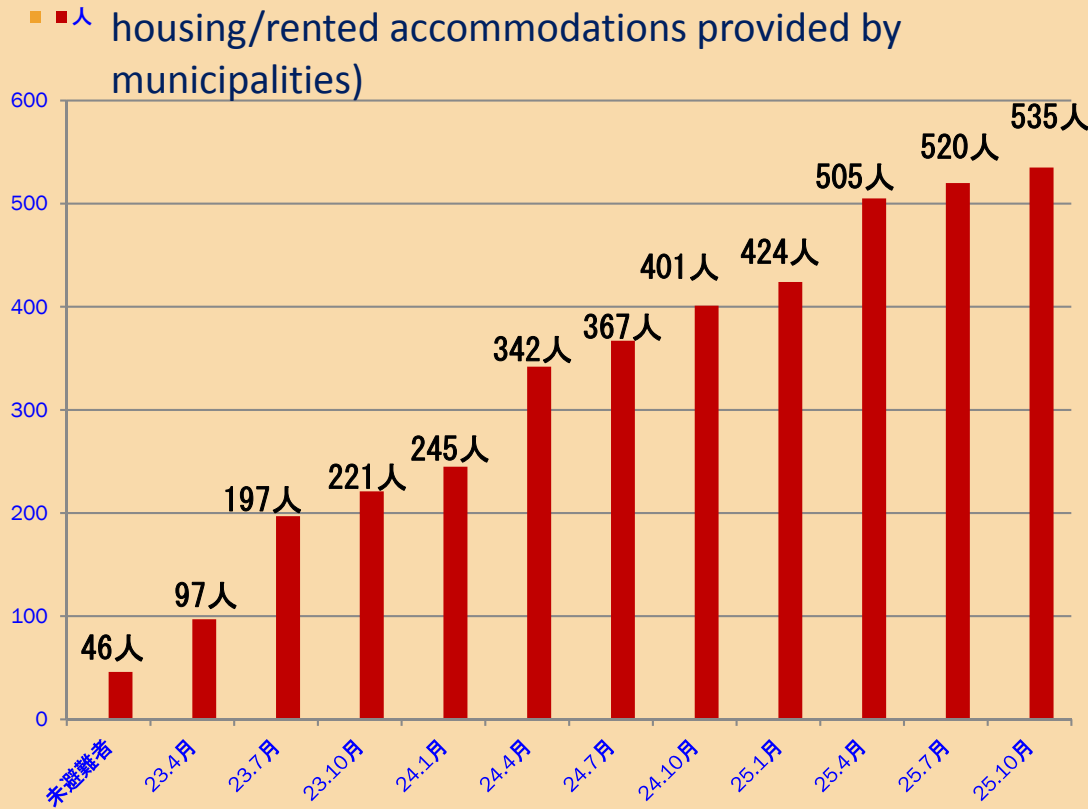
---

- × ① Decontamination
- × ② Developing employment opportunities
- × ③ Health management
- × ④ Educational environment
- × ⑤ Resuming agriculture, forestry and dairy farming
- × ⑥ Daily infrastructure
- × ⑦ Indemnity and damage compensation

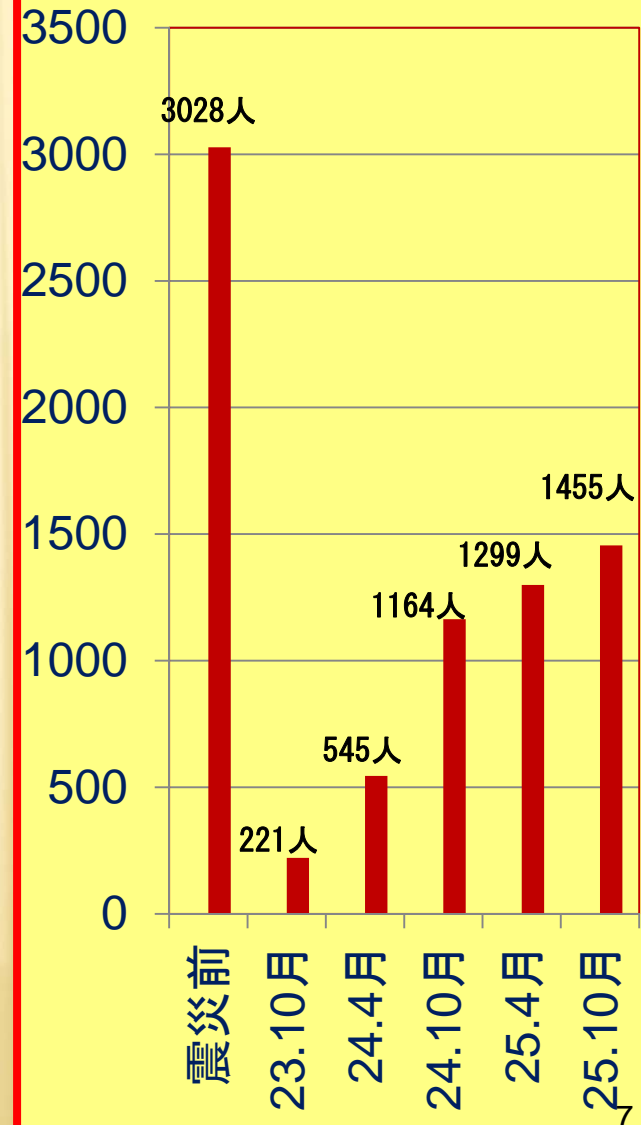
# Changes in Population since the Accident

Slowly increasing, but a severe situation!

Villagers who have returned and settled since the accident (Completely out of temporary housing/rented accommodations provided by municipalities)

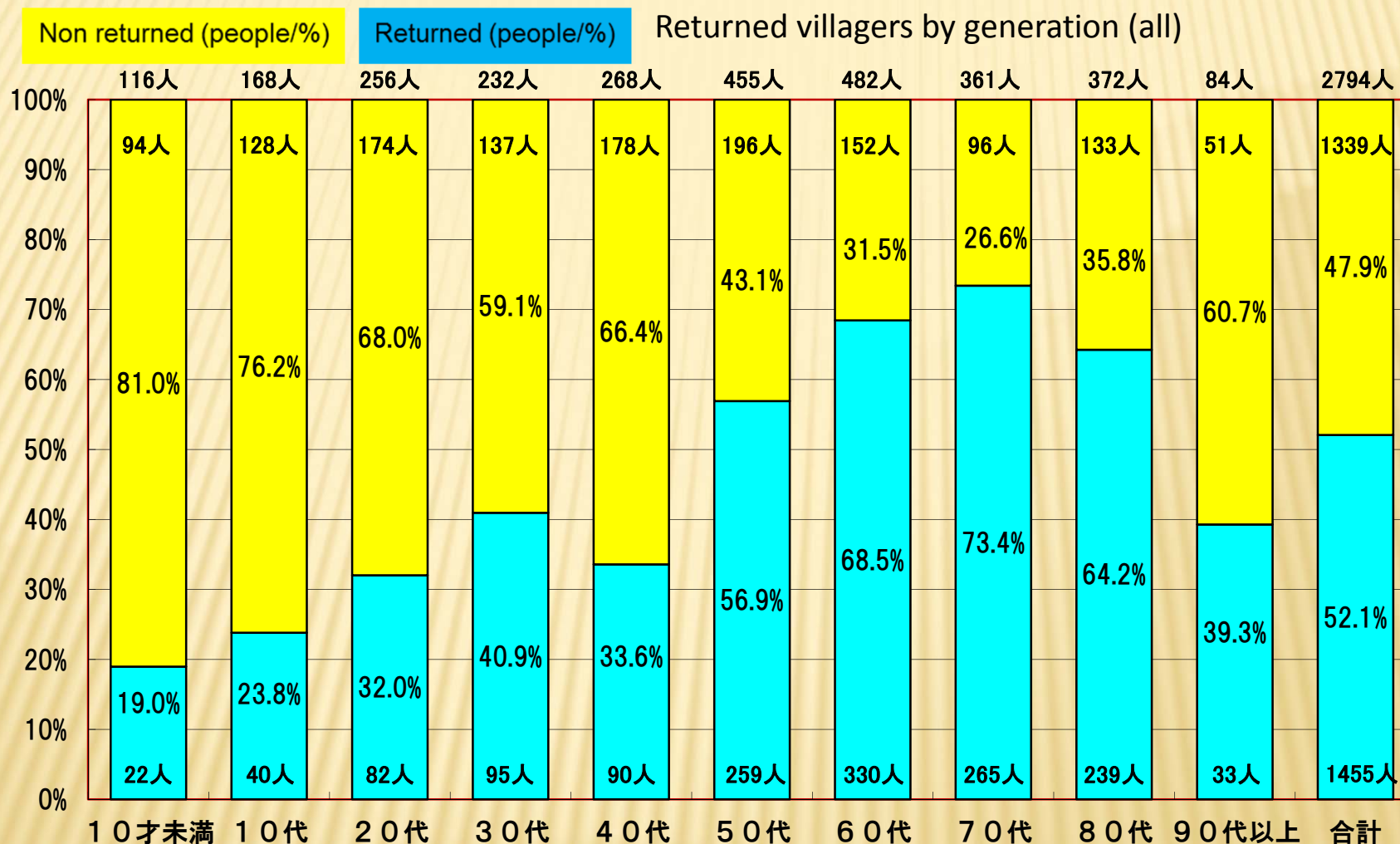


Population changes before and after the accident (including residing in two places)



# DESCRIPTION OF RETURNED VILLAGERS

(1,455 PEOPLE AS OF OCTOBER 1, 2013)



① Of villagers less than 50 years old, 31.6% have returned; of those 50 years old or older, 64.2% have returned.

② Issue



What can be done to encourage younger people to come back to the village?



# REASONS FOR NOT RETURNING

(INVESTIGATION IN FEBRUARY 2012)

- |   |                       |
|---|-----------------------|
| 1. Fear of radiation effects                                    | : 201 people (19.35%) |
| 2. Uncertain availability of medical care                       | : 161 (15.50%)        |
| 3. Uncertain living environment (stores, social services, etc.) | : 135 (12.99%)        |
| 4. Fear of no available work                                    | : 125 (12.03%)        |
| 5. Children attend school in evacuation area                    | : 110 (10.59%)        |
| 6. Uncertain ability to grow crops, etc.                        | : 85 (8.18%)          |
| 7. Within the restricted area                                   | : 64 (6.16%)          |
| 8. Employed in the evacuation area                              | : 62 (5.97%)          |
| 9. Other  | : 96 (9.24%)          |

Total: **1,039 people**

Three years after the disaster, polarization is increasingly clear

Return to village

Not return to village

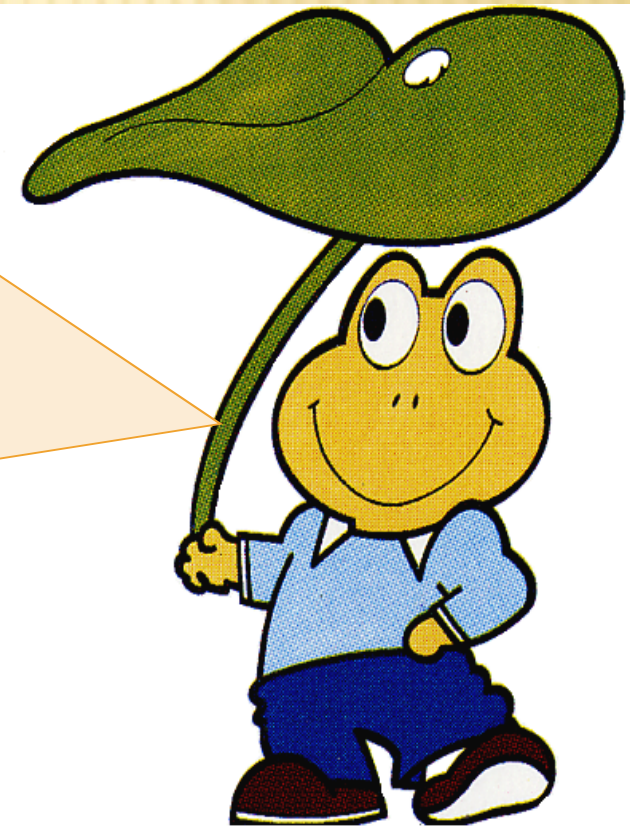
## CONCLUSION

---

- ① How to restore pride and rediscover significance in continuing to live in the village.
- ② Compensation is important, but more important is not losing desire – maintaining a goal.
- ③ Make short-term, intensive investments.
- ④ Do not allow opinions on returning versus not returning to create major conflicts between people.
- ⑤ High morale alone will not solve the problems.
- ⑥ Can Kawauchi survive as a municipality?

Kawauchi has received the support of many people. Deeply grateful, I believe our efforts to build and create a new village are our way to repay you. We ask for your continued support and cooperation.

Thank you.



自然の村長 モリタロウ くん

Moritaro